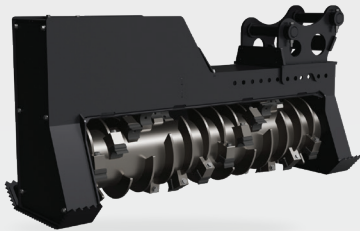


EXCAVATOR ATTACHMENTS



Diamond Mowers land management attachments for excavators.



EX DRUM DC PRO X
4.5 - 10 MT MULCHER

The 4.5-10MT Excavator Drum Mulcher DC Pro X increases the versatility of your excavator and maximizes cut width relative to weight for more productivity per pass. Class leading torque powers through large material quickly.

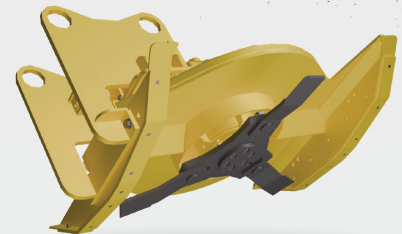
- Available cut widths: **30" | 50"**
- Mulches up to **8"** diameter brush/trees
- Excavator Size: **4.5 - 10 MT**



EX BRUSH CUTTER PRO X
4.5-10 MT

Ferocious things come in small packages and the 4.5-10MT Excavator Brush Cutter Pro X is no exception. Slice trees and brush quickly with this lightweight brush cutter.

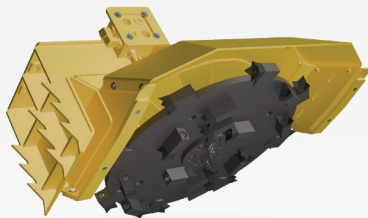
- Available cut widths: **40"**
- Cuts up to **4"** diameter brush/trees
- Excavator Size: **4.5 - 10 MT**



EX BRUSH CUTTER PRO X
6-25 MT

From contractor to private landowner, the 6-25MT Excavator Brush Cutter Pro X gets the job done. Slice trees and brush quickly with this powerful brush cutter.

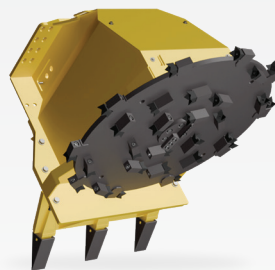
- Available cut widths: **50" | 60" | 72"**
- Cuts up to **10"** diameter brush/trees
- Excavator Size: **6 - 25 MT**



EX DISC PRO X
6-14 MT MULCHER

The lightweight 6-14MT Excavator Disc Mulcher Pro X is engineered for constant productivity with a powerful hydraulic motor - ready to obliterate anything in its path without slowing down.

- Available cut widths: **36"**
- Cuts up to **6"** diameter brush/trees
- Excavator Size: **6 - 14 MT**



EX DISC PRO X
13-27 MT MULCHER

The 13-27MT Excavator Disc Mulcher Pro X is engineered for larger excavators. The powerful hydraulic motor combined with inertia stored in the disc provides all the cutting power you need to get the job done.

- Available cut widths: **48"**
- Cuts up to **10"** diameter brush/trees
- Excavator Size: **13 - 27 MT**



EX EXCAVATOR GUARD
POLYCARBONATE

Designed with a ½" - thick polycarbonate panel, this durable and adjustable shield safeguards the operator, cab, and critical components from impacts and potential damage when mowing or mulching.

- Max Dimensions: **59 1/2" H x 40 1/4" W**
- Total Weight: **80 LBS**
- Excavator Size: **4.5 - 25 MT**

! *MINIMUM ½" THICK POLYCARBONATE OPERATOR PROTECTION REQUIRED. SOME APPLICATIONS MAY REQUIRE ADDITIONAL PROTECTION.

EXCAVATOR-ATTACHMENTS
R2-V3-09/23/24

CONTACT US



email hello@diamondmowers.com



web diamondmowers.com



main office 605.977.3300